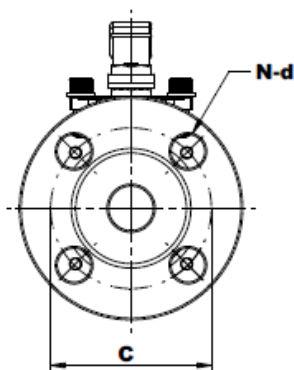
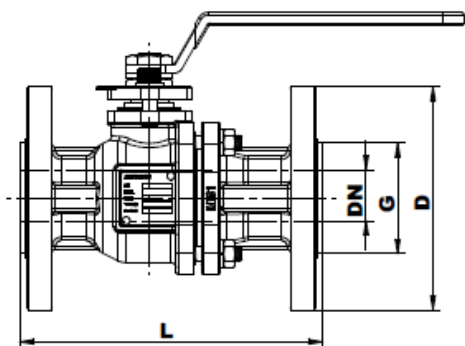
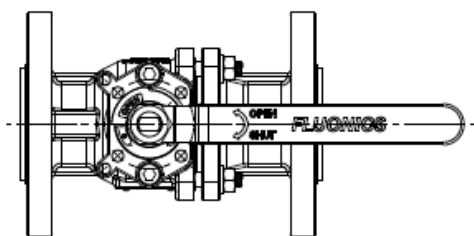
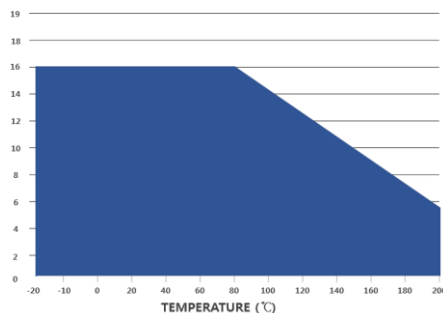


### FLUONICS Lined Products

Series FBA1



### Pressure-Temperature Chart



SIZE		Operating Torque(N·m)	Cv
½"	15A	8.8	15
¾"	20A	8.8	35
1"	25A	9.8	69
1½"	40A	15.7	215
2"	50A	22.5	335
-	65A	37	620
3"	80A	49	830
4"	100A	94	1455
6"	150A	215	3265

#### ANSI 150 LBS

**Body Materials**  
S: Stainless Steel / C: Carbon Steel / D: Ductile Iron

SIZE	DN	L	D	C	G	N-d	Body Materials		
½"	15	127	89	60.5	40	4-16	S	C	
¾"	20	127	98.5	70	49	4-16	S	C	
1"	25	127	108	79.5	51	4-16	S	C	D
1½"	36	165	127	98.5	70	4-16	S	C	D
2"	50	178	152	120.5	94	4-19	S	C	D
3"	76	203	190.5	152.5	123	4-19	S	C	D
4"	96	229	229	190.5	147	8-19	S	C	D
6"	145	267	279.5	241.3	210	8-22	S	C	D

#### JIS 10K

SIZE	DN	L	D	C	G	N-d	Body Materials		
15A	15	140	95	70	45	4-15	S	C	
20A	20	152	100	75	49	4-15	S	C	
25A	25	165	125	90	60	4-19	S	C	D
40A	36	191	140	105	73	4-19	S	C	D
50A	50	216	155	120	94	4-19	S	C	D
65A	65	240	175	140	103	4-19	S	C	
80A	76	250	185	150	123	8-19	S	C	D
100A	96	280	210	175	150	8-19	S	C	
150A	145	267	280	240	210	8-23	S	C	D